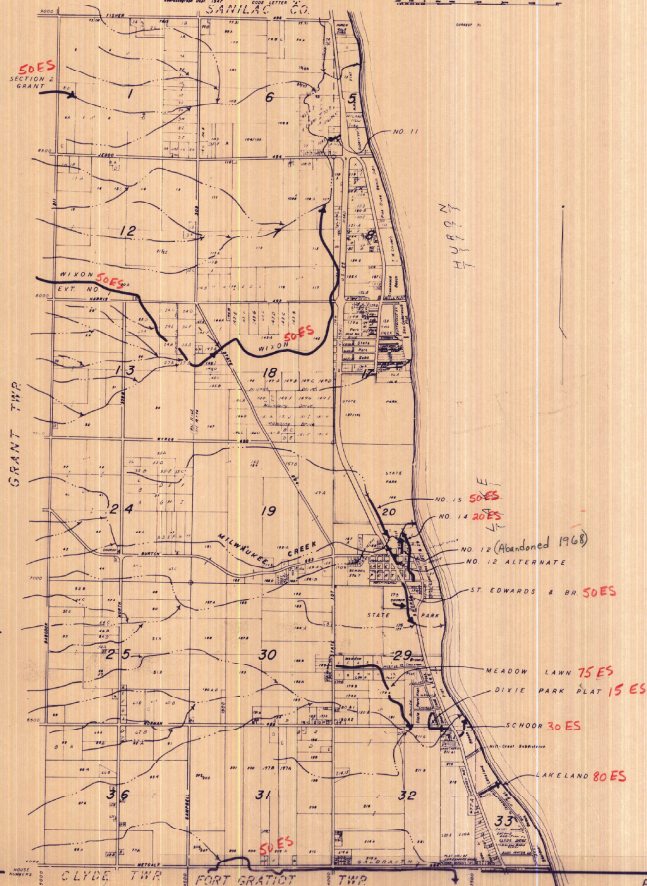


BURTCHVILLE TOWNSHIP, T. 8 N. R. 16 E. ST. CLAIR COUNTY, MICH. SCALE 1" = 2000'

ESTABLISHED COUNTY DRAINS



COUNTY DRAINS  
WATERCOURSE

(A)

(3)

BURTCHVILLE TOWNSHIP